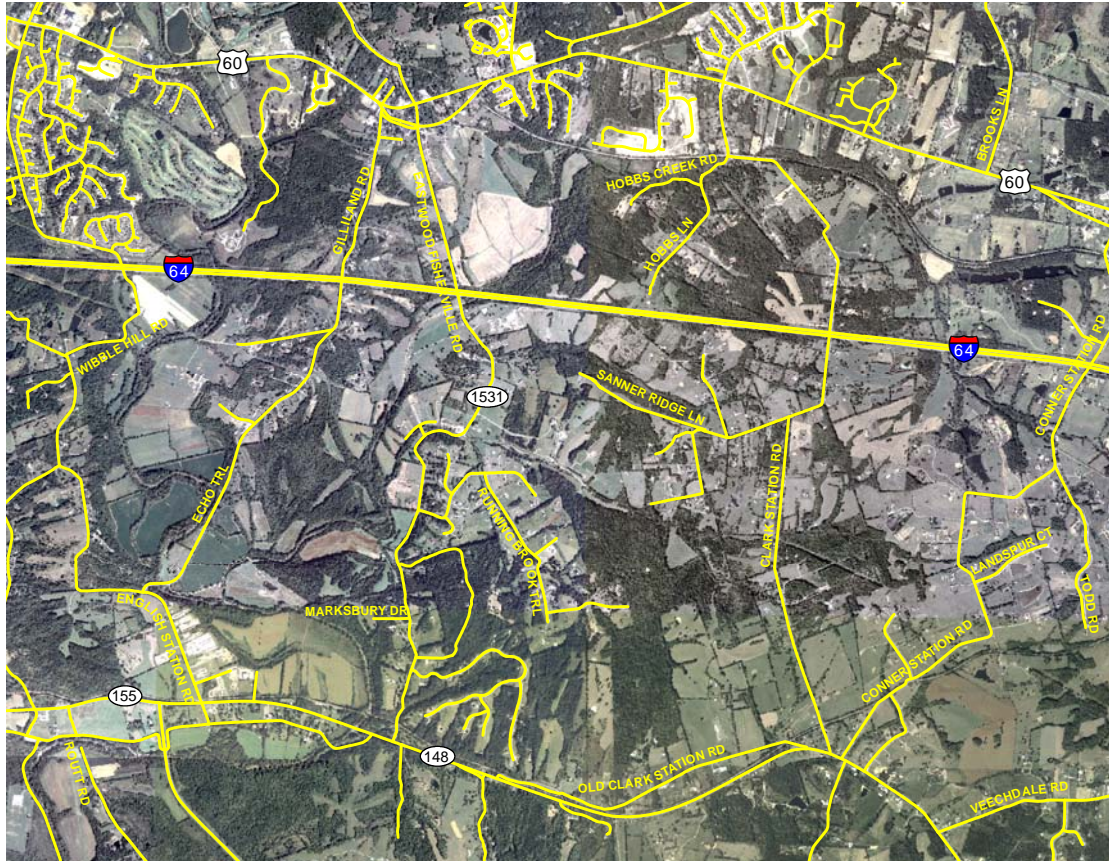


Environmental Justice Community Impact Assessment



Scoping Study for a Proposed Interchange on I-64 in the Vicinity of Gilliland Road Jefferson County/Shelby County, Kentucky KYTC Project #05-8200 KIPDA Project #390



December 2006



Environmental Justice Community Impact Assessment

Scoping Study for a Proposed Interchange on I-64 in the Vicinity of Gilliland Road Jefferson County/Shelby County, Kentucky KYTC Project #05-8200 KIPDA Project #390

December 2006

Kentuckiana Regional Planning and Development Agency
Transportation Division
the Metropolitan Planning Organization staff
for the Louisville (KY-IN) Metropolitan Planning Area

502-266-6084
502-266-5047 (fax)
800-962-8408 (Indiana TDD)
800-648-6056 (Kentucky TDD)

kipda.trans@ky.gov

<http://www.kipda.org>

This document is published by the Kentuckiana Regional Planning and Development Agency and is prepared with financial assistance from the Federal Transit Administration, the Federal Highway Administration, the Kentucky Transportation Cabinet, the Transit Authority of River City, and local governments in the KIPDA region, in cooperation with the Indiana Department of Transportation. This financial assistance notwithstanding, the contents of this document do not necessarily reflect the official views or policies of the funding agencies.

**This document is available in accessible formats when
requested in advance**

Table of Contents

INTRODUCTION _____	1
PURPOSE _____	1
BACKGROUND _____	1
RESOURCES/REFERENCES _____	4
TERMINOLOGY _____	4
ANALYSIS METHODOLOGY _____	7
COMMUNITY PROFILES _____	12
Minority Persons _____	12
Low-Income Persons _____	19
Elderly Persons _____	19
Persons with Disabilities _____	22
OTHER COMMUNITY INFORMATION _____	28
CONCLUSION _____	29

List of Figures

1	STUDY AREA BOUNDARY _____	2
2	STUDY AREA CENSUS TRACT BOUNDARIES _____	8
3	STUDY AREA CENSUS BLOCK GROUP BOUNDARIES _____	9
4	STUDY AREA CENSUS BLOCK BOUNDARIES _____	10
5	MINORITY PERSONS BY CENSUS TRACT—2000 _____	13
6	MINORITY PERSONS BY CENSUS BLOCK GROUP—2000 _____	14
7	MINORITY PERSONS BY CENSUS BLOCK—2000 _____	16
8	LOW-INCOME PERSONS BY CENSUS TRACT—2000 _____	20
9	LOW-INCOME PERSONS BY CENSUS BLOCK GROUP—2000 _____	21
10	ELDERLY PERSONS BY CENSUS TRACT—2000 _____	23
11	ELDERLY PERSONS BY CENSUS BLOCK GROUP—2000 _____	24
12	ELDERLY PERSONS BY CENSUS BLOCK—2000 _____	25
13	PERSONS WITH DISABILITIES BY CENSUS TRACT—2000 _____	26
14	PERSONS WITH DISABILITIES BY CENSUS BLOCK GROUP—2000 _____	27

List of Tables

1	POVERTY THRESHOLD IN 1999, BY SIZE OF FAMILY AND NUMBER OF RELATED CHILDREN UNDER 18 YEARS OLD ____	5
2	REALLOCATION OF CENSUS 2000 INFORMATION—KENTUCKY CORRECTIONAL INSTITUTION FOR WOMEN _____	12
3	MINORITY PERSONS—2000 _____	15
4	PERSONS BY ETHNICITY—2000 _____	17

List of Tables (cont'd)

5	PERSONS BY RACE—2000 _____	18
6	LOW-INCOME PERSONS—2000 _____	19
7	ELDERLY PERSONS—2000 _____	22
8	PERSONS WITH DISABILITIES—2000 _____	28

INTRODUCTION

This report documents an assessment of potential community impacts on Environmental Justice populations and other selected groups within the defined study area for a proposed interchange on I-64 in the vicinity of the Gilliland Road corridor in eastern Jefferson County/western Shelby County, Kentucky (Figure 1). The assessment has been prepared by the Kentuckiana Regional Planning and Development Agency in support of a Kentucky Transportation Cabinet planning study (Kentucky Six Year Highway Plan project #05-8200) conducted to investigate the feasibility of improving interstate access to a rapidly developing area by constructing an I-64 interchange with a connecting roadway between Taylorsville Road (KY 155/KY 148) and Shelbyville Road (US 60).

PURPOSE

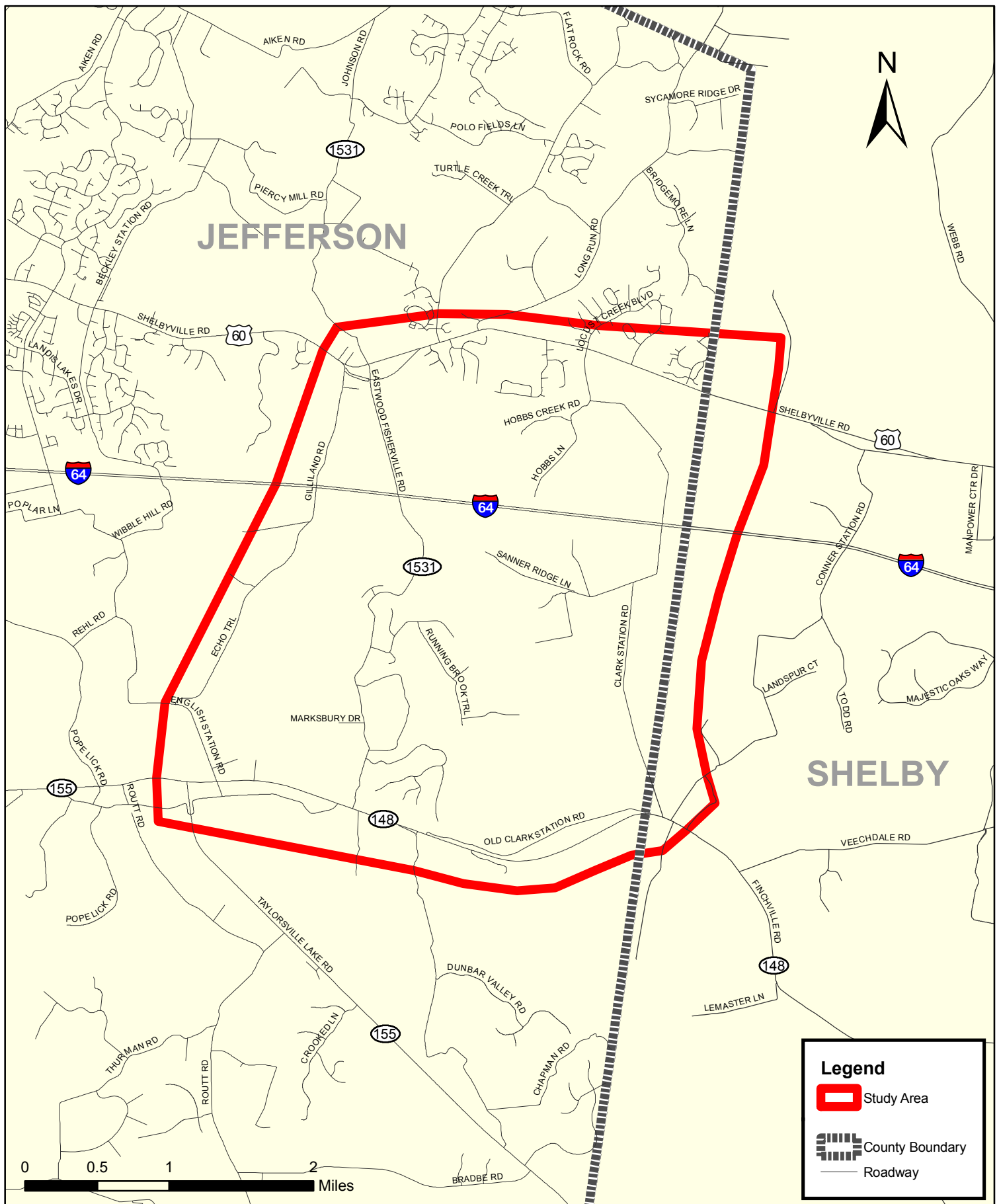
The purpose of this assessment is to:

- assist the Kentucky Transportation Cabinet in carrying out the Division of Planning's mission "... to collect, maintain, analyze and report accurate data for making sound fiscally responsible recommendations regarding the maintenance, operation and improvement of our transportation network";
- fulfill applicable federal Environmental Justice commitments; and
- further the goals and objectives and cooperative nature of the metropolitan transportation planning process.

The assessment is focused on identifying, through a demographic analysis, the extent to which Environmental Justice populations and other groups of concern reside in or near the study area and may be impacted by the proposed project. Subsequent actions (determination of disproportionately high and adverse effects; proposing measures to avoid, minimize, and/or mitigate such effects; and providing specific opportunities for public involvement) may be undertaken, as appropriate, contingent upon the results of the demographic analysis.

BACKGROUND

Environmental Justice is based on the principles of Title VI of the *Civil Rights Act of 1964*, wherein each Federal agency is required to ensure that no person on the grounds of race, color, or national origin, is excluded from participation in, denied the benefits of, or subjected to discrimination under any program or activity receiving federal financial assistance. In the context of transportation planning, Environmental Justice broadly refers to the goal of identifying and avoiding disproportionate adverse impacts on minority and low-income



Created by KIPDA October 2006 (LAK)

Copyright (c) 2006, Kentuckiana Regional Planning & Development Agency (KIPDA). All rights reserved.

No part of this may be reproduced or transmitted in any form or by any means, electronic or mechanical, including photocopying or recording, or by any information storage or retrieval system, except as expressly permitted in writing by KIPDA.

LIMITATION OF LIABILITY: KIPDA has no indication or reason to believe that there are any inaccuracies or defects in information incorporated in this work and make NO REPRESENTATIONS OF ANY KIND, INCLUDING, BUT NOT LIMITED TO, THE WARRANTIES OF MERCHANTABILITY OR FITNESS FOR A PARTICULAR USE, NOR ARE ANY SUCH WARRANTIES TO BE IMPLIED, WITH RESPECT TO THE INFORMATION OR DATA, FURNISHED HEREIN.

Figure 1

STUDY AREA BOUNDARY

**SCOPING STUDY FOR A PROPOSED INTERCHANGE
ON I-64 IN THE VICINITY OF GILLILAND ROAD**

(KYTC #05-8200 KIPDA #390)

Legend

Study Area

County Boundary

Roadway

individuals and communities. For the purposes of this assessment, Environmental Justice has been addressed through the following:

- **Executive Order 12898:** *Federal Actions to Address Environmental Justice in Minority Populations and Low-Income Populations* (February 11, 1994)

The order reads, in part: *"Each Federal agency shall make achieving environmental justice part of its mission by identifying and addressing, as appropriate, disproportionately high and adverse human health or environmental effects of its programs, policies, and activities on minority populations and low-income populations."*

- **U.S. Department of Transportation Order 5610.2:** *Department of Transportation Actions to Address Environmental Justice in Minority Populations and Low-Income Populations* (April 15, 1997)

The order reads, in part: *"Planning and programming activities that have the potential to have a disproportionately high and adverse effect on human health or the environment shall include explicit consideration of the effects on minority populations and low-income populations."*

- **Federal Highway Administration Order 6640.23:** *FHWA Actions to Address Environmental Justice in Minority Populations and Low-Income Populations* (December 2, 1998)

The order reads, in part: *"...it is FHWA's continuing policy to identify and prevent discriminatory effects by actively administering its programs, policies and activities to ensure that social impacts to communities and people are recognized early and continually throughout the transportation decision making process—from early planning through implementation."*

In the absence of a single Environmental Justice statute or regulation, planners must make use of the numerous orders, policies, and guidance documents that have been developed since the issuance of Executive Order 12898. This assessment attempts to apply current state of the practice procedures to provide the information needed to *"... ensure that the interests and well being of minority populations and low-income populations are considered and addressed during the transportation decision making process."*

Two additional groups included in this assessment are the elderly and persons with disabilities. The above Environmental Justice orders do not address these additional populations, so they are included in this analysis per the Kentucky Transportation Cabinet document, *Methodology for Assessing Potential Environmental Justice Concerns for KYTC Planning Studies*, as a matter of good planning practice.

RESOURCES/REFERENCES

The following federal, state, and local resources have been consulted for information and guidance in conducting this assessment:

- *Methodology for Assessing Potential Environmental Justice Concerns for KYTC Planning Studies* – Kentucky Transportation Cabinet, February 2002.
- *Community Assessment and Outreach Program for the Louisville (KY-IN) Metropolitan Planning Area for Title VI/Environmental Justice and Other Communities of Concern* – Kentuckiana Regional Planning and Development Agency, July 2006.
- *Environmental Justice/Title VI Plan* – Kentuckiana Regional Planning and Development Agency, October 2004.
- *Effective Methods for Environmental Justice Assessment* – National Cooperative Highway Research Program Report 532, September 2004.
- *Technical Methods to Support Analysis of Environmental Justice Issues* – National Cooperative Highway Research Program Project 8-36 (11), April 2002.
- US Census Bureau, 2000 Census, Summary Files 1 and 3

TERMINOLOGY

This assessment makes use of several terms, some of which may be unique to the Environmental Justice process. Their definitions may similarly have specific application limited to these procedures. For example, according to the Federal Highway Administration, the following terms and definitions shall be used:

Minority Persons include persons whose race can be identified as any one or more of the following categories:

- Black—persons having origins in any of the black racial groups of Africa;
- Asian—persons having origins in any of the original peoples of the Far East, Southeast Asia, or the Indian subcontinent;
- American Indian and Alaskan Native—persons having origins in any of the original people of North America and who maintain cultural identification through tribal affiliation or community recognition; and
- Native Hawaiian or Other Pacific Islander—persons having origins in any of the original peoples of Hawaii, Guam, Samoa, or other Pacific Islands.

Minority populations also include persons of any race or combination of races who identify their ethnicity, culture, or origin as Hispanic. Hispanics are persons

of Mexican, Puerto Rican, Cuban, Central or South American, or other Spanish culture or origin.

Low-Income Persons include persons whose household income is below the US Department of Health and Human Services poverty guidelines (Table 1). For the 2000 census, poverty status was determined for all persons except the institutionalized, military group quarters, persons in college dormitories, and unrelated individuals under 15 years old.

TABLE 1
Poverty Threshold in 1999, by Size of Family and Number of Related Children Under 18 Years Old

Size of Family Unit	Weighted Average Threshold	Related Children Under 18 Years Old								
		None	One	Two	Three	Four	Five	Six	Seven	Eight or More
One person (unrelated individual)	\$8,501									
Under 65 years old	\$8,667	\$7,990								
65 years old and over	\$7,990	\$7,990								
Two persons	\$10,869									
Householder under 65 years old	\$11,214	\$11,156	\$11,483							
Householder 65 years old and over	\$10,075	\$10,070	\$11,440							
Three persons	\$13,290	\$13,032	\$13,410	\$13,423						
Four persons	\$17,029	\$17,184	\$17,465	\$16,895	\$16,954					
Five persons	\$20,127	\$20,723	\$21,024	\$20,380	\$19,882	\$19,578				
Six persons	\$22,727	\$23,835	\$23,930	\$23,436	\$22,964	\$22,261	\$21,845			
Seven persons	\$25,912	\$27,425	\$27,596	\$27,006	\$26,595	\$25,828	\$24,934	\$23,953		
Eight persons	\$28,967	\$30,673	\$30,944	\$30,387	\$29,899	\$29,206	\$28,327	\$27,412	\$27,180	
Nine or more persons	\$34,417	\$36,897	\$37,076	\$36,583	\$36,169	\$35,489	\$34,554	\$33,708	\$33,499	\$32,208

Low-Income Population means any readily identifiable group of low-income persons who live in geographic proximity, and, if circumstances warrant, geographically dispersed/transient persons (such as migrant workers or Native Americans) who would be similarly affected by a proposed FHWA program, policy, or activity.

Minority Population means any readily identifiable groups of minority persons who live in geographic proximity, and if circumstances warrant, geographically dispersed/transient persons (such as migrant workers or Native Americans) who will be similarly affected by a proposed FHWA program, policy, or activity.

Adverse Effects are the totality of significant individual or cumulative human health or environmental effects, including interrelated social and economic effects, which may include, but are not limited to: bodily impairment, infirmity, illness or death; air, noise, and water pollution and soil contamination; destruction or disruption of man-made or natural resources; destruction or diminution of aesthetic values; destruction or disruption of community cohesion or a community's economic vitality; destruction or disruption of the availability of public and private facilities and services; vibration; adverse employment effects; displacement of persons, businesses, farms, or nonprofit organizations; increased traffic congestion, isolation, exclusion or separation of minority or low-income individuals within a given community or from the broader community; and the denial of, reduction in, or significant delay in the receipt of, benefits of FHWA programs, policies, or activities.

Disproportionately High and Adverse Effect on Minority and Low-Income Populations means an adverse effect that:

- is predominately borne by a minority population and/or a low-income population; or
- will be suffered by the minority population and/or low-income population and is appreciably more severe or greater in magnitude than the adverse effect that will be suffered by the nonminority population and/or nonlow-income population.

Programs, Policies, and/or Activities means all projects, programs, policies, and activities that affect human health or the environment, and that are undertaken, funded, or approved by FHWA. These include, but are not limited to, permits, licenses, and financial assistance provided by FHWA. Interrelated projects within a system may be considered to be a single project, program, policy, or activity.

The following terms are defined using US Census Bureau terminology and data:

Elderly Persons include persons age 65 and older as of April 1, 2000 (Census Day).

Persons with Disabilities include persons for which any of the 3 following conditions were true as of April 1, 2000 (Census Day):

- they were 5 years old and over and had a sensory, physical, mental, or self-care disability;
- they were 16 years old and over and had a going outside the home disability; or
- they were 16 to 64 years old and had an employment disability.

Census Tracts are small, relatively permanent statistical subdivisions of a county or statistically equivalent entity that are used to provide a stable set of geographic units for the presentation of census data. While tracts generally contain between 1,500 and 8,000 people, with an optimum size of 4,000 people, their spatial size can vary widely depending on the density of settlement. Figure 2 shows the census tracts in and around the study area.

Census Block Groups (BGs) are intermediate-level statistical subdivisions of census tracts that are used for the presentation of census data. Within each tract, they are aggregations of census blocks that have the same first digit of each four-digit identifying block number. Block groups generally contain between 600 and 3,000 persons, with an optimum size of 1,500 persons. Figure 3 shows the census block groups in and around the study area.

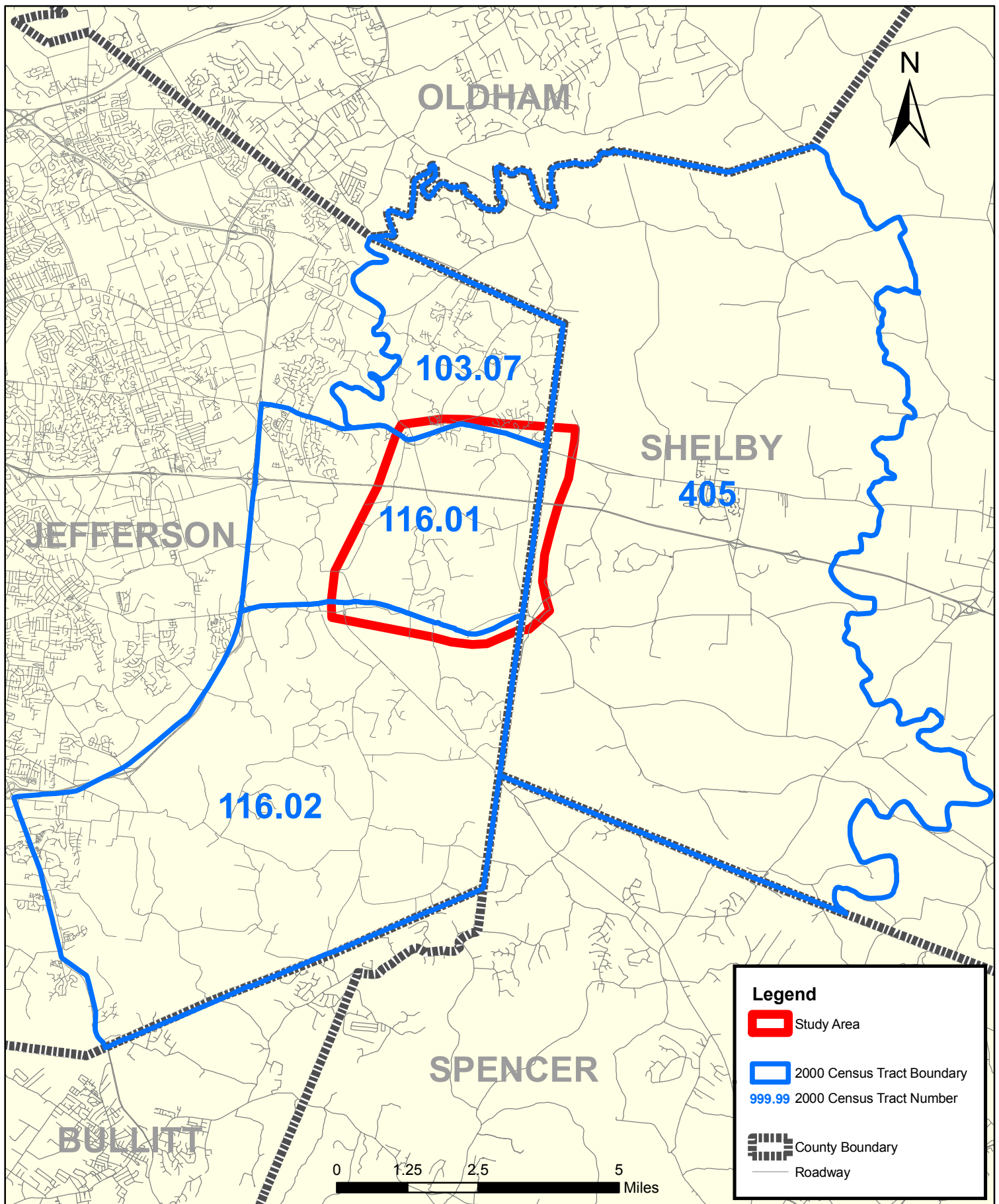
Census Blocks are the smallest statistical subdivisions of census tracts that are used for the presentation of census data. They are bounded on all sides by visible features, such as streets, roads, streams, and railroad tracks, and by invisible boundaries, such as city, town, township, and county limits, property lines, and short, imaginary extensions of streets and roads. Blocks are generally small in area, especially in densely settled areas, but may contain many square miles of territory in more sparsely settled areas. Figure 4 shows the census blocks in and around the study area.

ANALYSIS METHODOLOGY

The procedures involved in conducting the community impact assessment for this project centered on the identification of potentially impacted populations. Data from the 2000 census were used to develop demographic profile tables and maps of the locations of the groups of concern. Other community information was used, as available, to identify potentially impacted populations and future points of contact within the study area.

Tables and maps depicting race, ethnicity, minorities, and persons with low-income are used to indicate the locations and magnitudes of potentially impacted Environmental Justice populations. Elderly and disabled distributions are also represented in tabular and graphic form as part of the Kentucky Transportation Cabinet's standard planning study methodology. This project level assessment utilizes many of the same resources and methodologies as were used in the Louisville (KY-IN) Metropolitan Planning Area (MPA) systems level assessment. The MPA community assessment covered not only the populations mentioned above, but other potentially impacted groups as well as a matter of good planning practice.

Profile tables were developed for each population of interest and for several geographic levels in and around the study area. Tables showing the total number of persons by race, ethnicity, minority status, poverty status, elderly status, and



Created by KIPDA October 2006 (LAK)

Copyright (c) 2006, Kentuckiana Regional Planning & Development Agency (KIPDA). All rights reserved.

No part of this may be reproduced or transmitted in any form or by any means, electronic or mechanical, including photocopying or recording, or by any information storage or retrieval system, except as expressly permitted in writing by KIPDA.

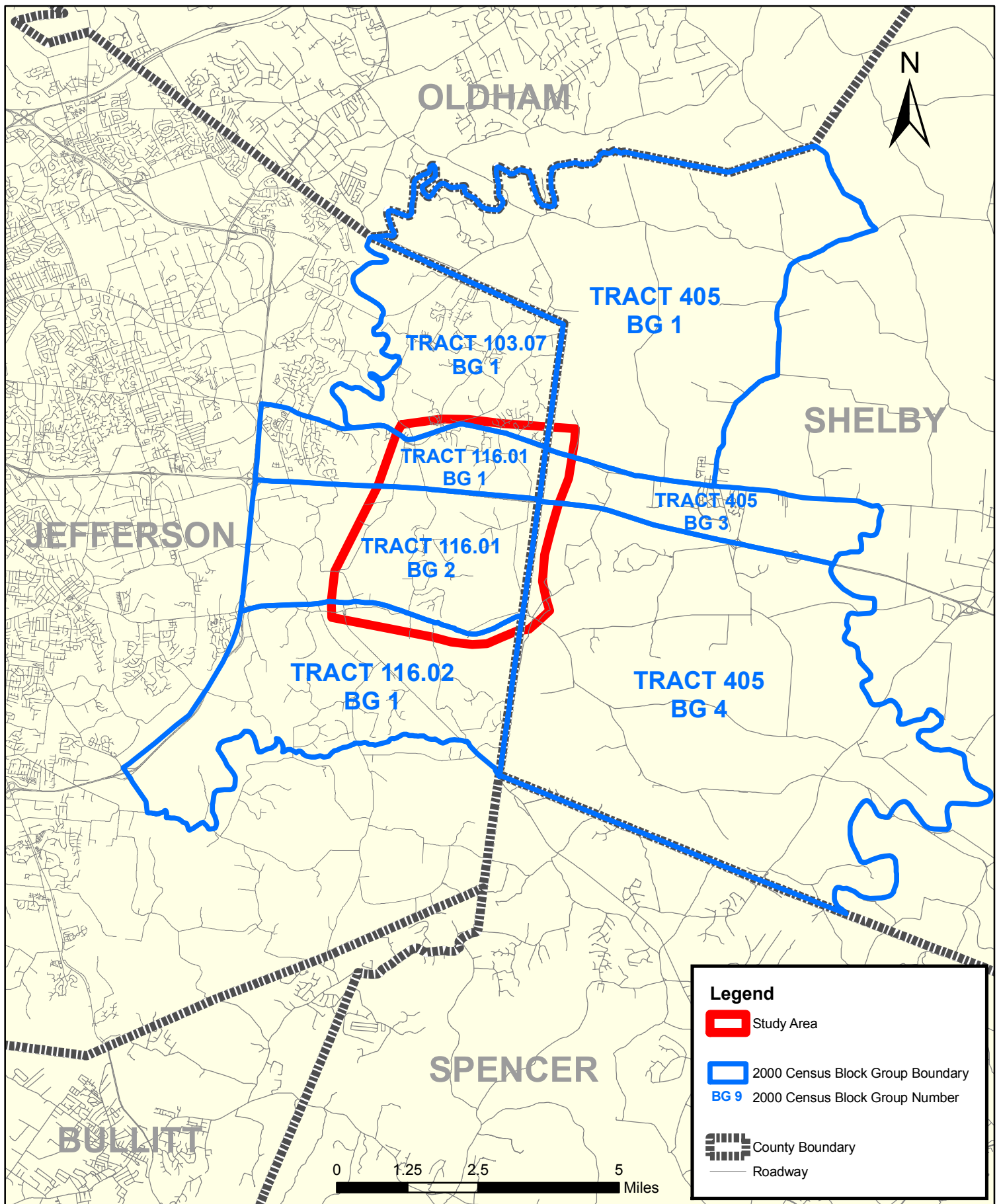
LIMITATION OF LIABILITY: KIPDA has no indication or reason to believe that there are any inaccuracies or defects in information incorporated in this work and make NO REPRESENTATIONS OF ANY KIND, INCLUDING, BUT NOT LIMITED TO, THE WARRANTIES OF MERCHANTABILITY OR FITNESS FOR A PARTICULAR USE, NOR ARE ANY SUCH WARRANTIES TO BE IMPLIED, WITH RESPECT TO THE INFORMATION OR DATA, FURNISHED HEREIN.

Figure 2

STUDY AREA CENSUS TRACT BOUNDARIES

SCOPING STUDY FOR A PROPOSED INTERCHANGE ON I-64 IN THE VICINITY OF GILLILAND ROAD

(KYTC #05-8200 KIPDA #390)



Created by KIPDA October 2006 (LAK)

Copyright (c) 2006, Kentuckiana Regional Planning & Development Agency (KIPDA). All rights reserved.

No part of this may be reproduced or transmitted in any form or by any means, electronic or mechanical, including photocopying or recording, or by any information storage or retrieval system, except as expressly permitted in writing by KIPDA.

LIMITATION OF LIABILITY: KIPDA has no indication or reason to believe that there are any inaccuracies or defects in information incorporated in this work and make NO REPRESENTATIONS OF ANY KIND, INCLUDING, BUT NOT LIMITED TO, THE WARRANTIES OF MERCHANTABILITY OR FITNESS FOR A PARTICULAR USE, NOR ARE ANY SUCH WARRANTIES TO BE IMPLIED, WITH RESPECT TO THE INFORMATION OR DATA, FURNISHED HEREIN.

Figure 3

STUDY AREA CENSUS BLOCK GROUP BOUNDARIES

SCOPING STUDY FOR A PROPOSED INTERCHANGE
ON I-64 IN THE VICINITY OF GILLILAND ROAD

(KYTC #05-8200 KIPDA #390)

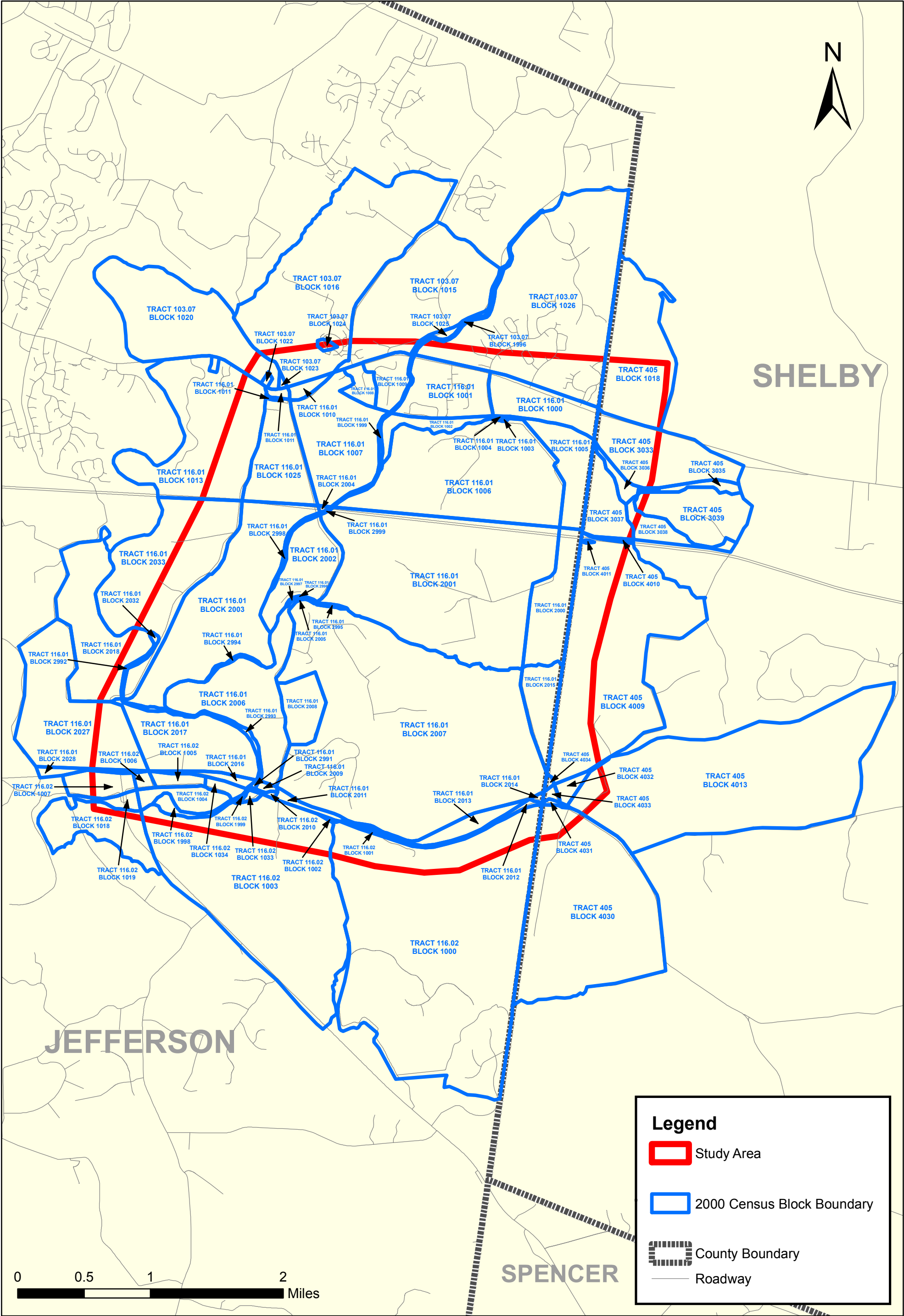


Figure 4

STUDY AREA CENSUS BLOCK BOUNDARIES
SCOPING STUDY FOR A PROPOSED INTERCHANGE
ON I-64 IN THE VICINITY OF GILLILAND ROAD
(KYTC #05-8200 KIPDA #390)

disability status were constructed for several geographic areas, including the United States, Kentucky, and Jefferson and Shelby counties, as well as applicable census tracts, block groups, and blocks. Due to the larger sizes of census tracts and block groups in the vicinity of the study area, only those which actually intersected some portion of the study area were determined to be appropriate for analysis. Also, because of the large number of census blocks present in and around the study area, only those blocks with higher populations of interest are discussed.

The tables were assembled using year 2000 census data. The decennial census data represent the most comprehensive information source available in terms of the number of data variables collected and the number of geographic levels available. Decennial census data is derived from two different sets of questionnaires, the short form and the long form. Short form data, or SF1 data, contains basic demographics and represents a 100% sample of the populous of the United States, while long form data, or SF3 data, contains more detailed social and economic characteristics and is gathered from an approximate 17% sample. The smallest level of geography available from SF1 is the census block, while the smallest level available from SF3 is the block group.

Profile maps were produced for each population variable at the tract, block group, and block levels, as available. ESRI ArcMap software was used to combine 2000 census data with TIGER/Line 2000 census tract, block group, and block boundaries in and around the study area to map locations of the populations of interest.

Most of the census data utilized for the analysis could be used directly from the SF1 and SF3 files and required no adjustments. A misallocation of the group quarters population of the Kentucky Correctional Institution for Women in Shelby County, however, did require a reallocation to the correct census geographies. Digital aerial photography was used to confirm this allocation error. Group quarters population originally allocated to census tract 405.00 block 4005 was reallocated to census tract 405.00 block 1029 (Table 2). The populations of the affected block groups, census tract 405.00 block groups 1 and 4, were adjusted as well. The overall population of tract 405.00 was unaffected by the internal reallocations. These adjustments affected the race, ethnicity, minority, and age variables, as they are based on the total population in an area (they include group quarters as well as persons in households). The adjustments did not affect the low-income or disability status variables, however, as they are based on the non-institutionalized population in an area (they do not include group quarters populations).

TABLE 2
Reallocation of Census 2000 Information
Kentucky Correctional Institution for Women

	Area	Total Population	Group Quarters Population	Minority Population	Race Alone						Hispanic Origin	Elderly (Age 65+)
					Black or African American	American Indian and Alaska Native	Asian	Native Hawaiian and Other Pacific Islander	Other Race	Two or More Races		
Original Allocation	Tract 405.00 Block Group 1	1719	0	67	21	5	19	0	6	14	9	180
	Tract 405.00 Block Group 4	2575	659	388	334	2	10	0	20	7	34	175
	Tract 405.00 Block 1029	110	0	1	0	1	0	0	0	0	0	5
	Tract 405.00 Block 4005	659	659	254	251	0	3	0	0	0	0	3
Adjusted Allocation	Tract 405.00 Block Group 1	2378	659	321	272	5	22	0	6	14	9	183
	Tract 405.00 Block Group 4	1916	0	134	83	2	7	0	20	7	34	172
	Tract 405.00 Block 1029	769	659	255	251	1	3	0	0	0	0	8
	Tract 405.00 Block 4005	0	0	0	0	0	0	0	0	0	0	0

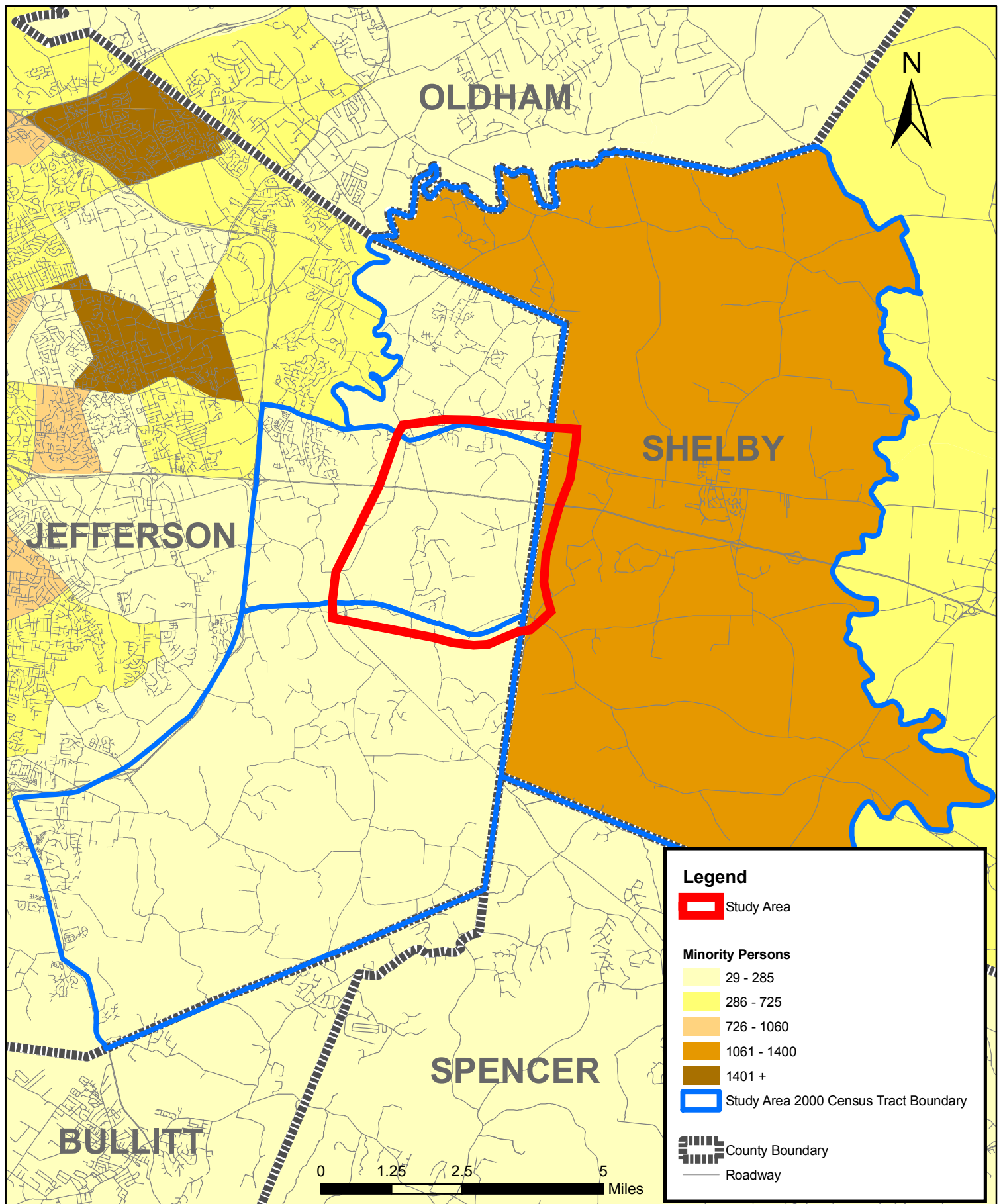
Data Source: 2000 Census SF1, Tables P1, P8, P12

COMMUNITY PROFILES

This section provides an examination of the demographic characteristics of the Environmental Justice populations and other selected groups within and surrounding the project study area. These profiles provide a basis for identifying the number and, where appropriate, the geographic location of potentially impacted persons in the communities of concern.

MINORITY PERSONS

According to year 2000 census data, the highest numbers and concentrations of minority persons existed in the census tracts and block groups that intersect the Shelby County portion of the study area. Specifically, census tract 405.00 and tract 405.00 block groups 1 and 3 contained the highest concentrations, with 16%, 13.5%, and 34% of the total population, respectively (Figures 5 and 6, Table 3). These higher concentrations were, in large part, due to the presence of two large group quarters facilities. One is the Kentucky Correctional Institution for Women, which accounted for over 250 minority women in tract 405.00 block group 1, and the other is the Whitney Young Job Corps Center, which added approximately 350 minority men and women dormitory residents to tract 405.00 block group 3.



Created by KIPDA October 2006 (LAK)

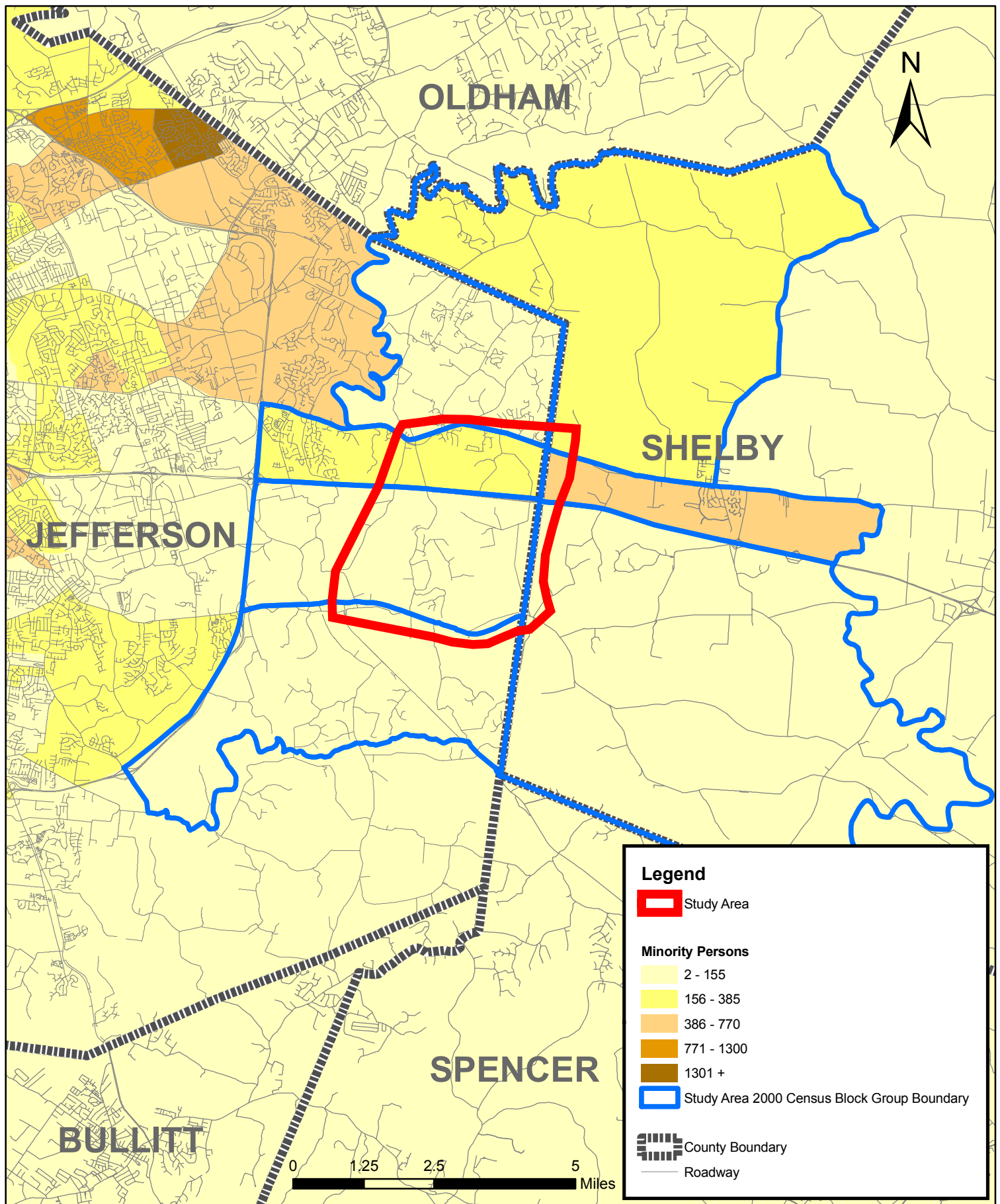
Copyright (c) 2006, Kentuckiana Regional Planning & Development Agency (KIPDA). All rights reserved.

No part of this may be reproduced or transmitted in any form or by any means, electronic or mechanical, including photocopying or recording, or by any information storage or retrieval system, except as expressly permitted in writing by KIPDA.

LIMITATION OF LIABILITY: KIPDA has no indication or reason to believe that there are any inaccuracies or defects in information incorporated in this work and make NO REPRESENTATIONS OF ANY KIND, INCLUDING, BUT NOT LIMITED TO, THE WARRANTIES OF MERCHANTABILITY OR FITNESS FOR A PARTICULAR USE, NOR ARE ANY SUCH WARRANTIES TO BE IMPLIED, WITH RESPECT TO THE INFORMATION OR DATA, FURNISHED HEREIN.

Figure 5

MINORITY PERSONS BY CENSUS TRACT--2000
SCOPING STUDY FOR A PROPOSED INTERCHANGE
ON I-64 IN THE VICINITY OF GILLILAND ROAD
 (KYTC #05-8200 KIPDA #390)



Created by KIPDA October 2006 (LAK)

Copyright (c) 2006, Kentuckiana Regional Planning & Development Agency (KIPDA). All rights reserved.

No part of this may be reproduced or transmitted in any form or by any means, electronic or mechanical, including photocopying or recording, or by any information storage or retrieval system, except as expressly permitted in writing by KIPDA.

LIMITATION OF LIABILITY: KIPDA has no indication or reason to believe that there are any inaccuracies or defects in information incorporated in this work and make NO REPRESENTATIONS OF ANY KIND, INCLUDING, BUT NOT LIMITED TO, THE WARRANTIES OF MERCHANTABILITY OR FITNESS FOR A PARTICULAR USE, NOR ARE ANY SUCH WARRANTIES TO BE IMPLIED, WITH RESPECT TO THE INFORMATION OR DATA, FURNISHED HEREIN.

Figure 6
MINORITY PERSONS BY CENSUS BLOCK GROUP
2000
SCOPING STUDY FOR A PROPOSED INTERCHANGE
ON I-64 IN THE VICINITY OF GILLILAND ROAD
 (KYTC #05-8200 KIPDA #390)

TABLE 3
Minority Persons—2000
Study Area for a Proposed Interchange on I-64 in the Vicinity of Gilliland Road

		Total Population	Non-Hispanic		Hispanic		Minority Population	
			White	Non-White	White	Non-White	Total	%
Area								
United States		281,421,906	194,552,774	51,563,314	16,907,852	18,397,966	86,869,132	30.87
Kentucky		4,041,769	3,608,013	373,817	32,876	27,063	433,756	10.73
Jefferson County		693,604	530,056	151,178	6,665	5,705	163,548	23.58
Shelby County		33,337	28,293	3,539	581	924	5,044	15.13
Census Areas Intersecting and Surrounding the Study Area	Tract 103.07	1,635	1,525	80	21	9	110	6.73
	Block Group 1	1,635	1,525	80	21	9	110	6.73
	Tract 116.01	3,085	2,835	191	27	32	250	8.10
	Block Group 1	2,142	1,939	161	18	24	203	9.48
	Block Group 2	943	896	30	9	8	47	4.98
	Tract 116.02	4,940	4,749	165	24	2	191	3.87
	Block Group 1	926	908	16	0	2	18	1.94
	Tract 405.00	6,533	5,463	898	40	132	1,070	16.38
	Block Group 1	2,378	2,057	312	2	7	321	13.50
	Block Group 3	1,720	1,135	468	23	94	585	34.01
	Block Group 4	1,916	1,782	100	15	19	134	6.99

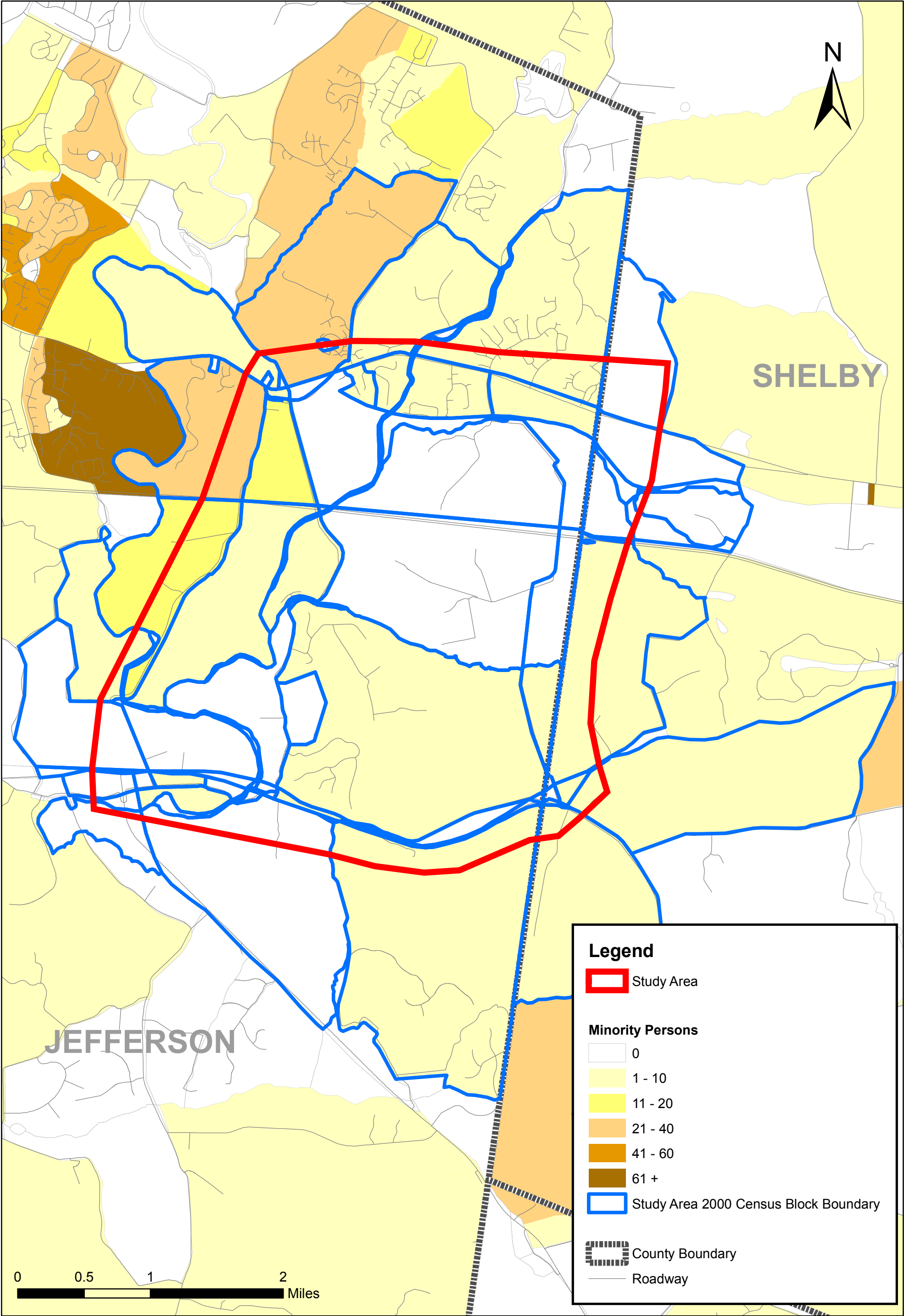
Note: Only selected Block Groups are represented and do not necessarily sum to Tract totals.
Data Source: 2000 Census SF1, Tables P1, P8

By removing the effects of the two group quarters facilities from the analysis, the minority concentrations in each of the study area tracts and block groups become significantly lower than the national average of 31%. For the most part, this is also true when comparing these areas to the statewide average of 11%—an exception being tract 405.00 block group 3, whose average becomes only slightly higher than the Kentucky average. Each of the Jefferson County study area tract and block group minority averages are lower than the county average of 24%. Without the correctional and job corps facility residents, the Shelby County tract and block group average concentrations also become lower than the county average of 15%.

At the block level (Figure 7), the highest numbers and concentrations of minority populations were found in the northwestern portion of the study area. The highest of these were in the range of 21 to 40 persons. Blacks/African-Americans and Hispanics were the most predominant minority group in the study area. Neither the Kentucky Correctional Institution for Women nor the Whitney Young Job Corps Center is located within the study area.

Ethnicity

Table 4 shows ethnicity in the study area based on 2000 census data. The majority of persons in and around the study area were non-Hispanic. With a maximum of 7% Hispanics in tract 405.00 block group 3, none of the tract or block group concentrations came close to the national average of 13%.



Created by KIPDA October 2006 (LAK)

Copyright (c) 2006, Kentuckiana Regional Planning & Development Agency (KIPDA). All rights reserved.

No part of this may be reproduced or transmitted in any form or by any means, electronic or mechanical, including photocopying or recording, or by any information storage or retrieval system, except as expressly permitted in writing by KIPDA.

LIMITATION OF LIABILITY: KIPDA has no indication or reason to believe that there are any inaccuracies or defects in information incorporated in this work and make NO REPRESENTATIONS OF ANY KIND, INCLUDING, BUT NOT LIMITED TO, THE WARRANTIES OF MERCHANTABILITY OR FITNESS FOR A PARTICULAR USE, NOR ARE ANY SUCH WARRANTIES TO BE IMPLIED, WITH RESPECT TO THE INFORMATION OR DATA, FURNISHED HEREIN.

Figure 7

MINORITY PERSONS BY CENSUS BLOCK--2000

SCOPING STUDY FOR A PROPOSED INTERCHANGE

ON I-64 IN THE VICINITY OF GILLILAND ROAD

(KYTC #05-8200 KIPDA #390)



Kentucky, Jefferson County, and most of the study area tracts and block groups exhibited similar Hispanic percentages, ranging from one to two percent. Shelby County's Hispanic population percentage was somewhat higher, at around 5%. The highest tract and block group concentrations occurred there as well, with almost 3% Hispanics in tract 405.00 and close to 7% in tract 405.00 block group 3. Most of the Hispanics in this tract and block group lived in and east of Simpsonville, outside of the study area.

TABLE 4
Persons by Ethnicity—2000
Study Area for a Proposed Interchange on I-64 in the Vicinity of Gilliland Road

Area		Total Population	Non-Hispanic		Hispanic	
			Persons	%	Persons	%
United States		281,421,906	246,116,088	87.45	35,305,818	12.55
Kentucky		4,041,769	3,981,830	98.52	59,939	1.48
Jefferson County		693,604	681,234	98.22	12,370	1.78
Shelby County		33,337	31,832	95.49	1,505	4.51
Census Areas Intersecting and Surrounding the Study Area	Tract 103.07	1,635	1,605	98.17	30	1.83
	Block Group 1	1,635	1,605	98.17	30	1.83
	Tract 116.01	3,085	3,026	98.09	59	1.91
	Block Group 1	2,142	2,100	98.04	42	1.96
	Block Group 2	943	926	98.20	17	1.80
	Tract 116.02	4,940	4,914	99.47	26	0.53
	Block Group 1	926	924	99.78	2	0.22
	Tract 405.00	6,533	6,361	97.37	172	2.63
	Block Group 1	2,378	2,369	99.62	9	0.38
	Block Group 3	1,720	1,603	93.20	117	6.80
	Block Group 4	1,916	1,882	98.23	34	1.77

Note: Only selected Block Groups are represented and do not necessarily sum to Tract totals.
Data Source: 2000 Census SF1, Tables P1, P8

Race

Table 5 shows the racial composition of the study area as of the 2000 census. The minority race most often reported by respondents living in and around the study area was black or African American. The next largest minority group was Asian, followed with some variance by other races, two or more races, American Indian and Alaska Native, and Native Hawaiian and other Pacific Islander. This pattern was quite consistent from the national level through to the block group level.

The highest concentrations of blacks/African-Americans were present in tract 405.00 and tract 405.00 block groups 1 and 3—primarily due to the presence of larger black group quarters populations at the Kentucky Correctional Institution for Women and the Whitney Young Job Corps Center. Other, lower

TABLE 5
Persons by Race—2000
Study Area for a Proposed Interchange on I-64 in the Vicinity of Gilliland Road

Area		Total Population	One Race												Two or More Races	
			White		Black or African American		American Indian and Alaska Native		Asian		Native Hawaiian and other Pacific Islander		Other Race			
			Persons	%	Persons	%	Persons	%	Persons	%	Persons	%	Persons	%		
United States		281,421,906	211,460,626	75.14	34,658,190	12.32	2,475,956	0.88	10,242,998	3.64	398,835	0.14	15,359,073	5.46	6,826,228	2.43
Kentucky		4,041,769	3,640,889	90.08	295,994	7.32	8,616	0.21	29,744	0.74	1,460	0.04	22,623	0.56	42,443	1.05
Jefferson County		693,604	536,721	77.38	130,928	18.88	1,523	0.22	9,640	1.39	255	0.04	4,695	0.68	9,842	1.42
Shelby County		33,337	28,874	86.61	2,942	8.83	101	0.30	133	0.40	41	0.12	798	2.39	448	1.34
Census Areas Intersecting and Surrounding the Study Area	Tract 103.07	1,635	1,546	94.56	34	2.08	3	0.18	22	1.35	0	0.00	14	0.86	16	0.98
	Block Group 1	1,635	1,546	94.56	34	2.08	3	0.18	22	1.35	0	0.00	14	0.86	16	0.98
	Tract 116.01	3,085	2,862	92.77	125	4.05	1	0.03	52	1.69	0	0.00	25	0.81	20	0.65
	Block Group 1	2,142	1,957	91.36	112	5.23	1	0.05	41	1.91	0	0.00	15	0.70	16	0.75
	Block Group 2	943	905	95.97	13	1.38	0	0.00	11	1.17	0	0.00	10	1.06	4	0.42
	Tract 116.02	4,940	4,773	96.62	81	1.64	4	0.08	40	0.81	0	0.00	5	0.10	37	0.75
	Block Group 1	926	908	98.06	5	0.54	1	0.11	3	0.32	0	0.00	3	0.32	6	0.65
	Tract 405.00	6,533	5,503	84.23	809	12.38	15	0.23	34	0.52	4	0.06	110	1.68	58	0.89
	Block Group 1	2,378	2,059	86.59	272	11.44	5	0.21	22	0.93	0	0.00	6	0.25	14	0.59
	Block Group 3	1,720	1,158	67.33	448	26.05	8	0.47	5	0.29	0	0.00	73	4.24	28	1.63
Block Group 4	1,916	1,797	93.79	83	4.33	2	0.10	7	0.37	0	0.00	20	1.04	7	0.37	

Note: Only selected Block Groups are represented and do not necessarily sum to Tract totals.

Data Source: 2000 Census SF1, Tables P1, P8

concentrations of African-Americans existed in and east of Simpsonville and west of the study area near Beckley Station Road.

LOW-INCOME PERSONS

According to the 2000 census, 12% of persons in the nation were low-income, having incomes below poverty level (Table 6). Jefferson County mirrored this trend, while Kentucky's percentage was higher than the national trend and Shelby County's was lower. The Jefferson County tracts and block groups in the study area exhibited significantly lower concentrations of low-income persons, ranging from 1% to 7%. The Shelby County study area tracts and block groups, however, tended to have higher concentrations of low-income persons, ranging from 4% to 20% of the population. Tracts 116.02 and 405.00 and tract 405.00 block groups 3 and 4 had the highest numbers of low-income persons (Figures 8 and 9).

Poverty information is not available at the block level, making identification of specific neighborhoods or facilities difficult.

TABLE 6
Low-Income Persons—2000
Study Area for a Proposed Interchange on I-64 in the Vicinity of Gilliland Road

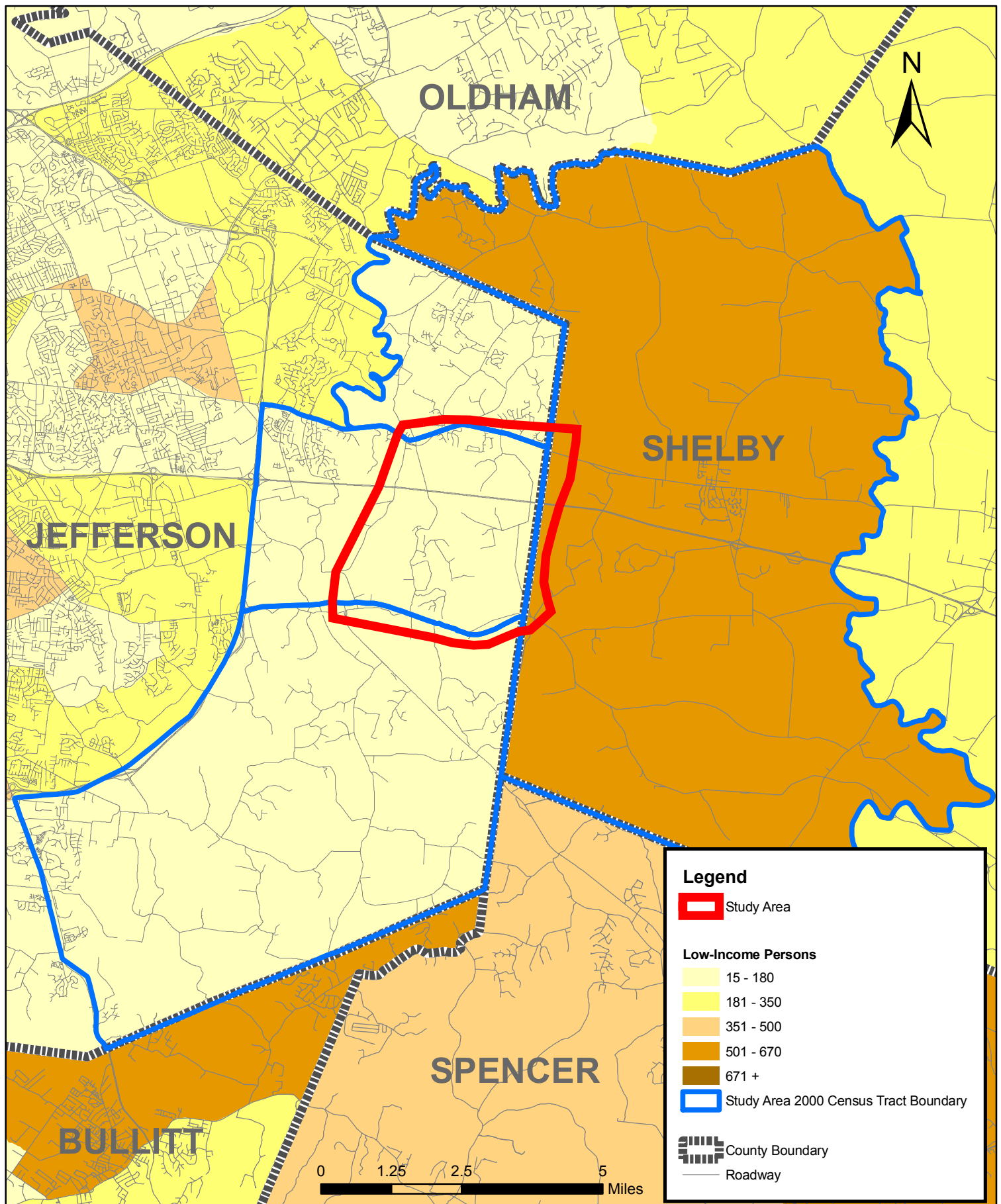
Area		Total Population for Which Poverty Status is Determined	At or Above Poverty Level		Below Poverty Level	
			Total	%	Total	%
United States		273,882,232	239,982,420	87.62	33,899,812	12.38
Kentucky		3,927,047	3,305,951	84.18	621,096	15.82
Jefferson County		680,882	596,739	87.64	84,143	12.36
Shelby County		32,223	29,025	90.08	3,198	9.92
Census Areas Intersecting and Surrounding the Study Area	Tract 103.07	1,549	1,523	98.32	26	1.68
	Block Group 1	1,549	1,523	98.32	26	1.68
	Tract 116.01	3,009	2,958	98.31	51	1.69
	Block Group 1	2,096	2,073	98.90	23	1.10
	Block Group 2	913	885	96.93	28	3.07
	Tract 116.02	4,940	4,821	97.59	119	2.41
	Block Group 1	869	809	93.10	60	6.90
	Tract 405.00	5,876	5,301	90.21	575	9.79
	Block Group 1	1,746	1,668	95.53	78	4.47
	Block Group 3	1,719	1,383	80.45	336	19.55
	Block Group 4	1,919	1,775	92.50	144	7.50

Note: Only selected Block Groups are represented and do not necessarily sum to Tract totals.

Data Source: 2000 Census SF3, Table P87

ELDERLY PERSONS

Elderly persons, age 65 and older, comprised between 11% and 14% of the year 2000 individual populations of the United States, Kentucky, and Jefferson and Shelby counties (Table 7). Of these areas, Shelby County had the lowest concentration of elderly persons (11%) and Jefferson the highest (14%). Most of



Created by KIPDA October 2006 (LAK)

Copyright (c) 2006, Kentuckiana Regional Planning & Development Agency (KIPDA). All rights reserved.

No part of this may be reproduced or transmitted in any form or by any means, electronic or mechanical, including photocopying or recording, or by any information storage or retrieval system, except as expressly permitted in writing by KIPDA.

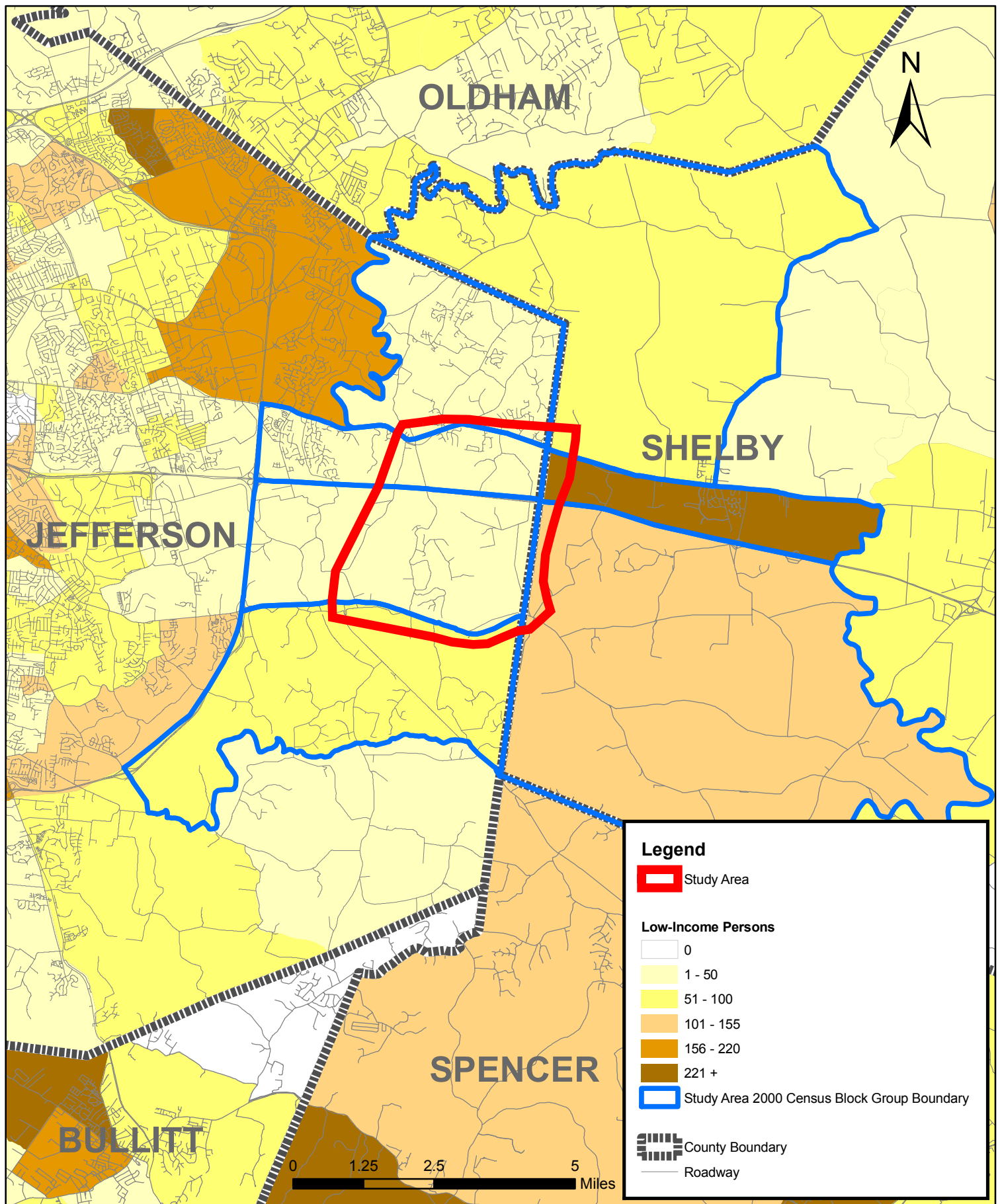
LIMITATION OF LIABILITY: KIPDA has no indication or reason to believe that there are any inaccuracies or defects in information incorporated in this work and make NO REPRESENTATIONS OF ANY KIND, INCLUDING, BUT NOT LIMITED TO, THE WARRANTIES OF MERCHANTABILITY OR FITNESS FOR A PARTICULAR USE, NOR ARE ANY SUCH WARRANTIES TO BE IMPLIED, WITH RESPECT TO THE INFORMATION OR DATA, FURNISHED HEREIN.

Figure 8

LOW-INCOME PERSONS BY CENSUS TRACT--2000

SCOPING STUDY FOR A PROPOSED INTERCHANGE
ON I-64 IN THE VICINITY OF GILLILAND ROAD

(KYTC #05-8200 KIPDA #390)



Created by KIPDA October 2006 (LAK)

Copyright (c) 2006, Kentuckiana Regional Planning & Development Agency (KIPDA). All rights reserved.

No part of this may be reproduced or transmitted in any form or by any means, electronic or mechanical, including photocopying or recording, or by any information storage or retrieval system, except as expressly permitted in writing by KIPDA.

LIMITATION OF LIABILITY: KIPDA has no indication or reason to believe that there are any inaccuracies or defects in information incorporated in this work and make NO REPRESENTATIONS OF ANY KIND, INCLUDING, BUT NOT LIMITED TO, THE WARRANTIES OF MERCHANTABILITY OR FITNESS FOR A PARTICULAR USE, NOR ARE ANY SUCH WARRANTIES TO BE IMPLIED, WITH RESPECT TO THE INFORMATION OR DATA, FURNISHED HEREIN.

Figure 9
LOW-INCOME PERSONS BY CENSUS BLOCK GROUP
2000
SCOPING STUDY FOR A PROPOSED INTERCHANGE
ON I-64 IN THE VICINITY OF GILLILAND ROAD
(KYTC #05-8200 KIPDA #390)

the tracts and block groups in and around the study area exhibited lower concentrations of elderly persons, with the majority below 10%. The highest tract and block group elderly percentages occurred in Jefferson County in tract 116.01 block group 2 (10%), tract 116.02 (12%), and in tract 116.02 block group 1 (13%), while the highest elderly populations were found in tracts 116.02 and 405.00 and in tract 405.00 block group 1 (Figures 10 and 11).

TABLE 7
Elderly Persons—2000
Study Area for a Proposed Interchange on I-64 in the Vicinity of Gilliland Road

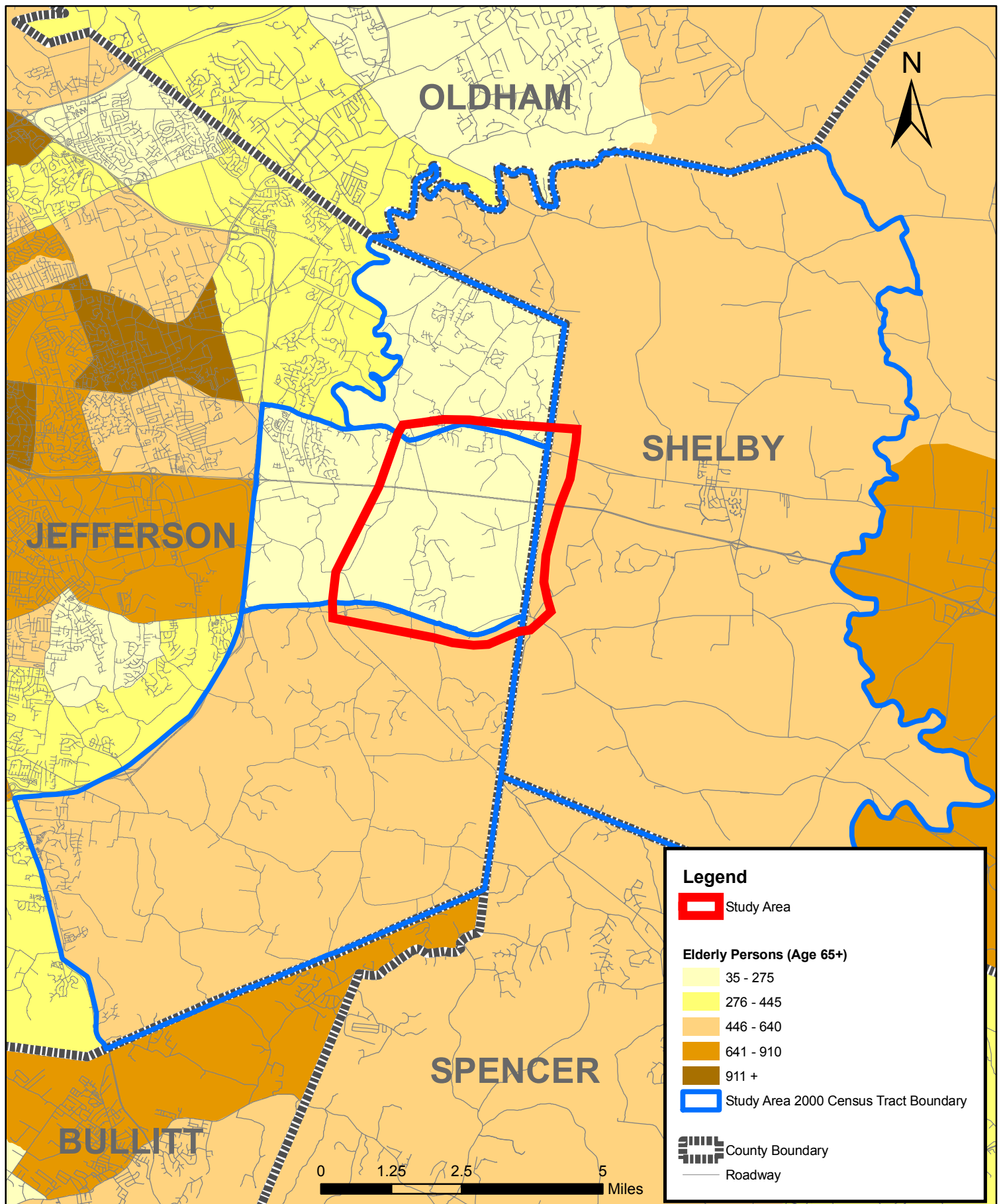
Area		Total Population	Under Age 65		Age 65+	
			Total	%	Total	%
United States		281,421,906	246,430,153	87.57	34,991,753	12.43
Kentucky		4,041,769	3,536,976	87.51	504,793	12.49
Jefferson County		693,604	599,622	86.45	93,982	13.55
Shelby County		33,337	29,747	89.23	3,590	10.77
Census Areas Intersecting and Surrounding the Study Area	Tract 103.07	1,635	1,532	93.70	103	6.30
	Block Group 1	1,635	1,532	93.70	103	6.30
	Tract 116.01	3,085	2,893	93.78	192	6.22
	Block Group 1	2,142	2,046	95.52	96	4.48
	Block Group 2	943	847	89.82	96	10.18
	Tract 116.02	4,940	4,370	88.46	570	11.54
	Block Group 1	926	810	87.47	116	12.53
	Tract 405.00	6,533	6,014	92.06	519	7.94
	Block Group 1	2,378	2,195	92.30	183	7.70
	Block Group 3	1,720	1,598	92.91	122	7.09
	Block Group 4	1,916	1,744	91.02	172	8.98

Note: Only selected Block Groups are represented and do not necessarily sum to Tract totals.
Data Source: 2000 Census SF1, Table P12

At the block level (Figure 12), the highest elderly populations were found in the northwestern and central portions of the study area. The highest individual block population was 31 persons, with the majority of blocks in the 6 to 10 person range.

PERSONS WITH DISABILITIES

Persons with disabilities comprised 19% of the civilian noninstitutionalized population over the age of five in the United States (Table 8). While the percentages for Kentucky (24%) and Jefferson County (20%) were slightly higher than the national average, the percentage for Shelby County (17%) was a bit lower. Within the study area, and with the exception of one block group, the tract and block group level percentages of persons with disabilities were all lower than the national, state, and county levels. Tract 116.02 block group 1 had the highest percentage of persons with disabilities (22%). The highest numbers of persons with disabilities were located in tracts 116.02 and tracts 405.00 (Figures 13 and 14).



Created by KIPDA October 2006 (LAK)

Copyright (c) 2006, Kentuckiana Regional Planning & Development Agency (KIPDA). All rights reserved.

No part of this may be reproduced or transmitted in any form or by any means, electronic or mechanical, including photocopying or recording, or by any information storage or retrieval system, except as expressly permitted in writing by KIPDA.

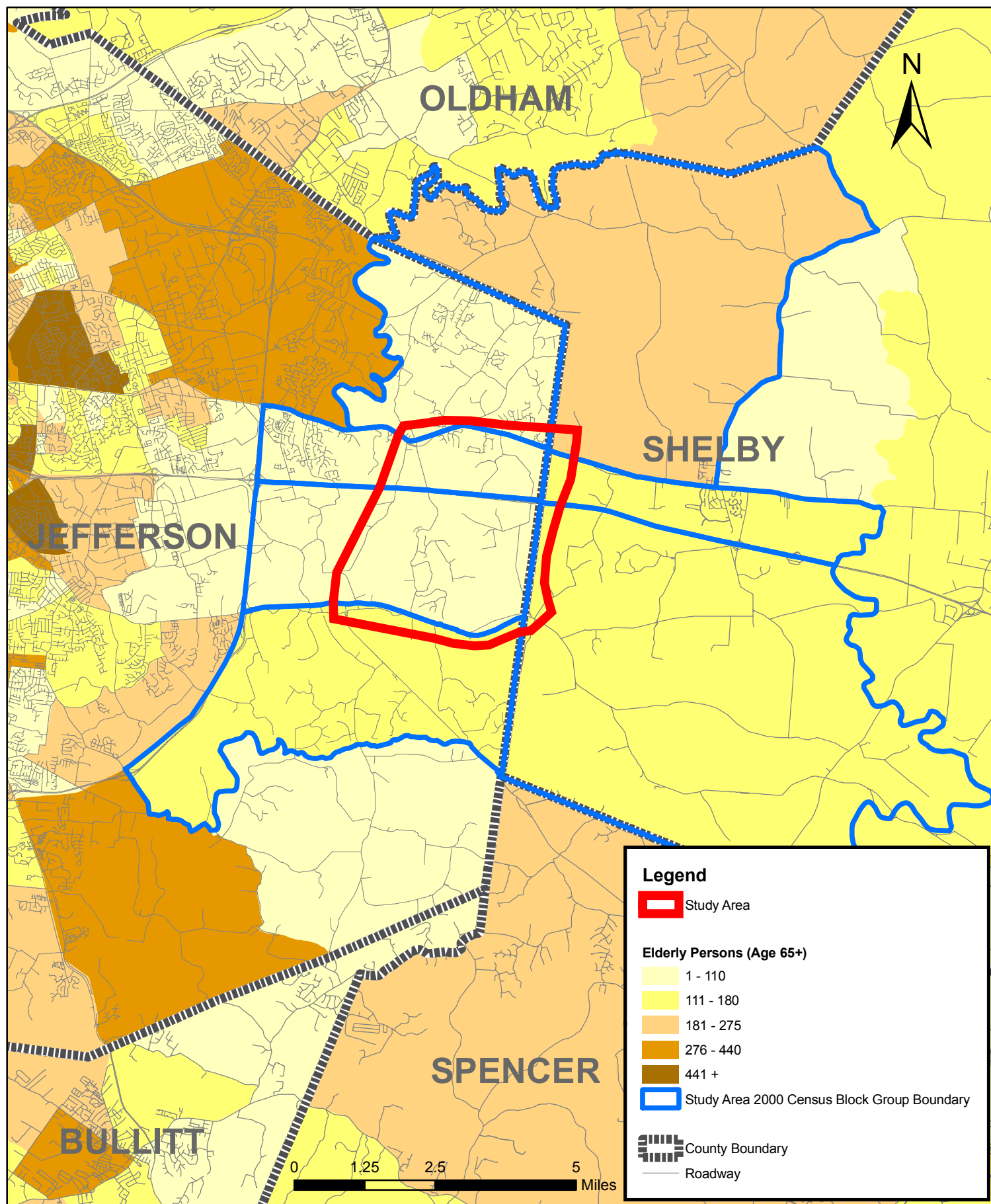
LIMITATION OF LIABILITY: KIPDA has no indication or reason to believe that there are any inaccuracies or defects in information incorporated in this work and make NO REPRESENTATIONS OF ANY KIND, INCLUDING, BUT NOT LIMITED TO, THE WARRANTIES OF MERCHANTABILITY OR FITNESS FOR A PARTICULAR USE, NOR ARE ANY SUCH WARRANTIES TO BE IMPLIED, WITH RESPECT TO THE INFORMATION OR DATA, FURNISHED HEREIN.

Figure 10

ELDERLY PERSONS BY CENSUS TRACT--2000

SCOPING STUDY FOR A PROPOSED INTERCHANGE
ON I-64 IN THE VICINITY OF GILLILAND ROAD

(KYTC #05-8200 KIPDA #390)



Created by KIPDA October 2006 (LAK)

Copyright (c) 2006, Kentuckiana Regional Planning & Development Agency (KIPDA). All rights reserved.

No part of this may be reproduced or transmitted in any form or by any means, electronic or mechanical, including photocopying or recording, or by any information storage or retrieval system, except as expressly permitted in writing by KIPDA.

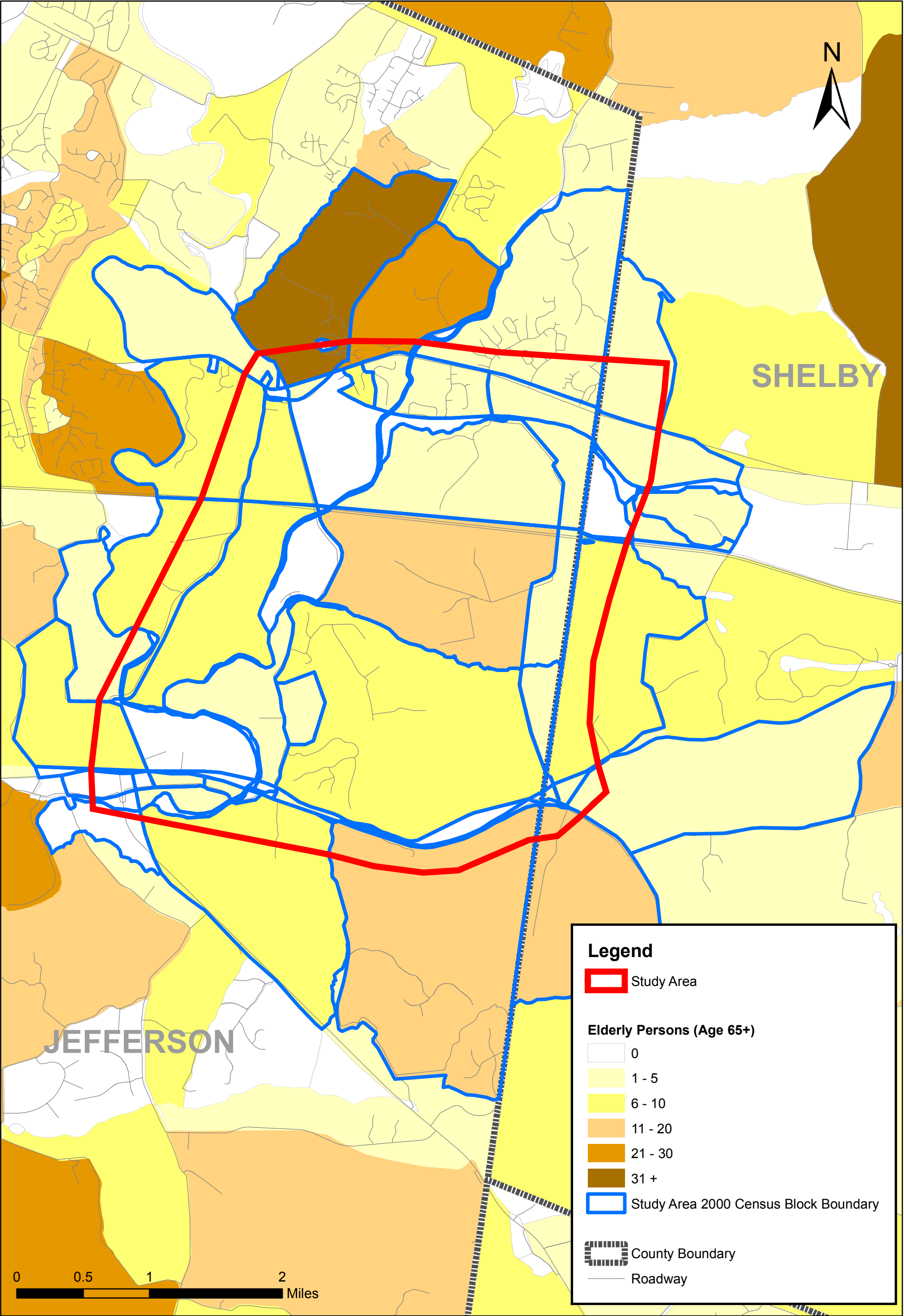
LIMITATION OF LIABILITY: KIPDA has no indication or reason to believe that there are any inaccuracies or defects in information incorporated in this work and make NO REPRESENTATIONS OF ANY KIND, INCLUDING, BUT NOT LIMITED TO, THE WARRANTIES OF MERCHANTABILITY OR FITNESS FOR A PARTICULAR USE, NOR ARE ANY SUCH WARRANTIES TO BE IMPLIED, WITH RESPECT TO THE INFORMATION OR DATA, FURNISHED HEREIN.

Figure 11

ELDERLY PERSONS BY CENSUS BLOCK GROUP--2000

SCOPING STUDY FOR A PROPOSED INTERCHANGE
ON I-64 IN THE VICINITY OF GILLILAND ROAD

(KYTC #05-8200 KIPDA #390)



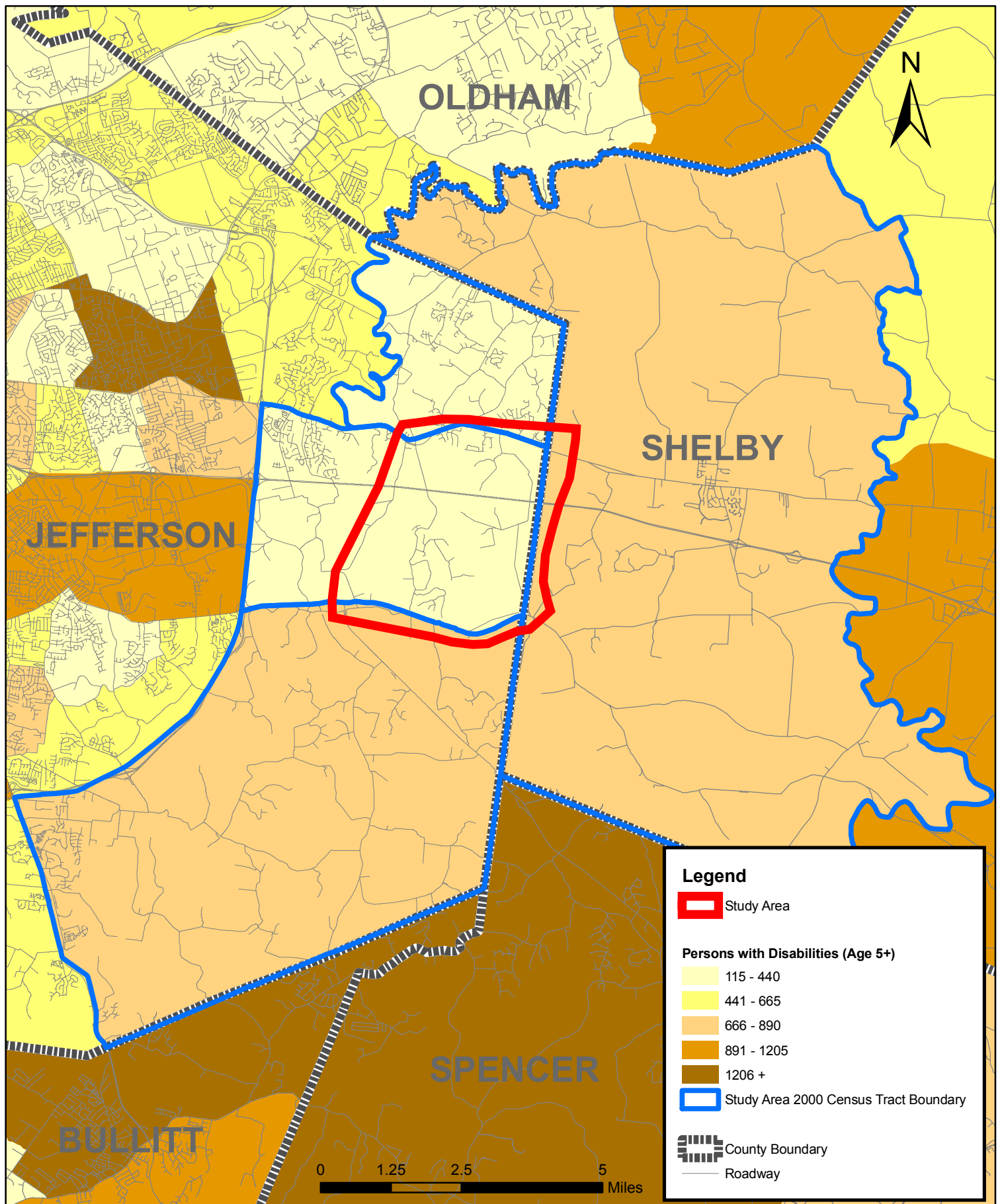
Created by KIPDA October 2006 (LAK)

Copyright (c) 2006, Kentuckiana Regional Planning & Development Agency (KIPDA). All rights reserved.

No part of this may be reproduced or transmitted in any form or by any means, electronic or mechanical, including photocopying or recording, or by any information storage or retrieval system, except as expressly permitted in writing by KIPDA.

LIMITATION OF LIABILITY: KIPDA has no indication or reason to believe that there are any inaccuracies or defects in information incorporated in this work and make NO REPRESENTATIONS OF ANY KIND, INCLUDING, BUT NOT LIMITED TO, THE WARRANTIES OF MERCHANTABILITY OR FITNESS FOR A PARTICULAR USE, NOR ARE ANY SUCH WARRANTIES TO BE IMPLIED, WITH RESPECT TO THE INFORMATION OR DATA, FURNISHED HEREIN.

Figure 12
ELDERLY PERSONS BY CENSUS BLOCK--2000
SCOPING STUDY FOR A PROPOSED INTERCHANGE
ON I-64 IN THE VICINITY OF GILLILAND ROAD
(KYTC #05-8200 KIPDA #390)



Created by KIPDA October 2006 (LAK)

Copyright (c) 2006, Kentuckiana Regional Planning & Development Agency (KIPDA). All rights reserved.

No part of this may be reproduced or transmitted in any form or by any means, electronic or mechanical, including photocopying or recording, or by any information storage or retrieval system, except as expressly permitted in writing by KIPDA.

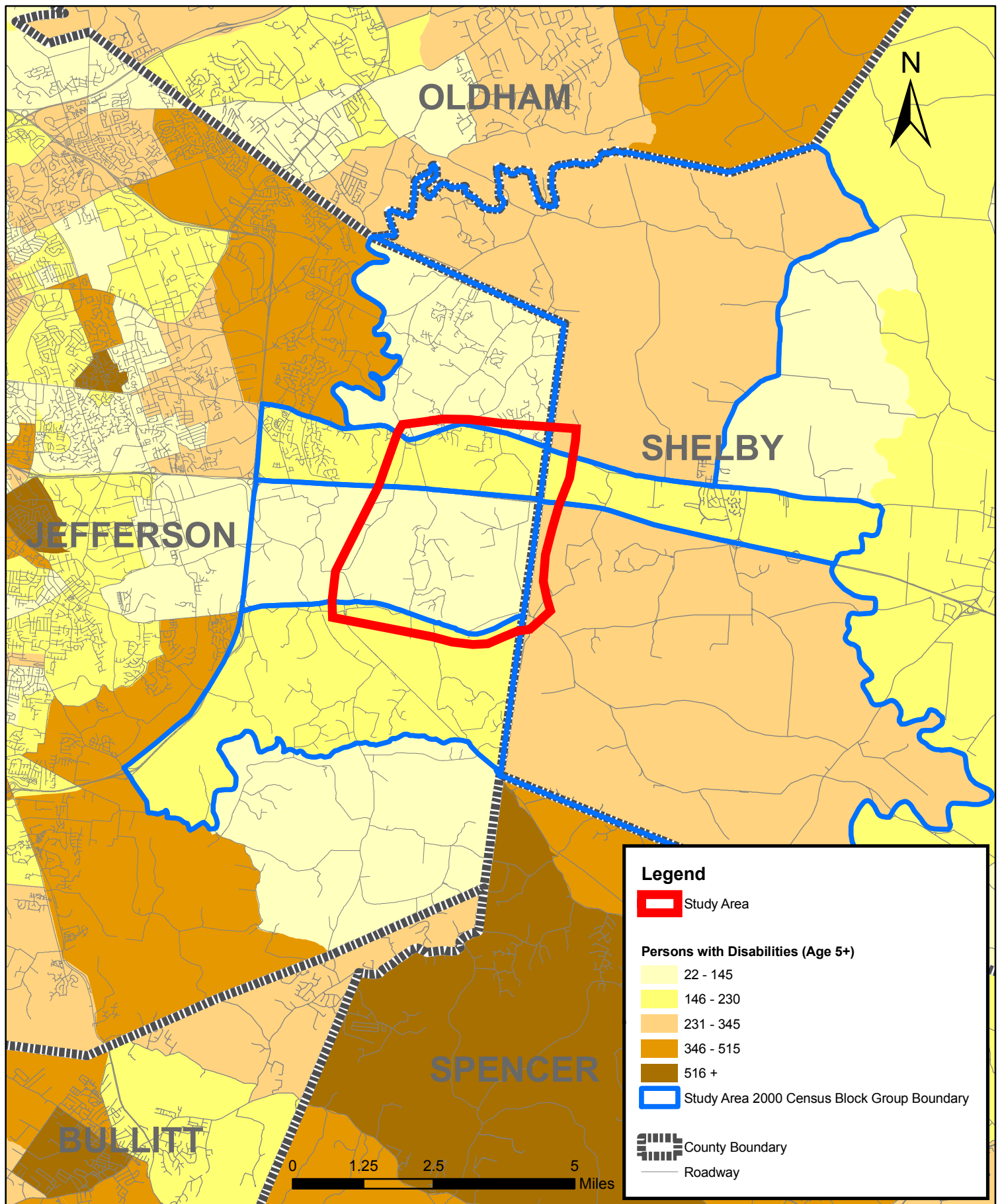
LIMITATION OF LIABILITY: KIPDA has no indication or reason to believe that there are any inaccuracies or defects in information incorporated in this work and make NO REPRESENTATIONS OF ANY KIND, INCLUDING, BUT NOT LIMITED TO, THE WARRANTIES OF MERCHANTABILITY OR FITNESS FOR A PARTICULAR USE, NOR ARE ANY SUCH WARRANTIES TO BE IMPLIED, WITH RESPECT TO THE INFORMATION OR DATA, FURNISHED HEREIN.

Figure 13

PERSONS WITH DISABILITIES BY CENSUS TRACT--2000

SCOPING STUDY FOR A PROPOSED INTERCHANGE ON I-64 IN THE VICINITY OF GILLILAND ROAD

(KYTC #05-8200 KIPDA #390)



Created by KIPDA October 2006 (LAK)

Copyright (c) 2006, Kentuckiana Regional Planning & Development Agency (KIPDA). All rights reserved.

No part of this may be reproduced or transmitted in any form or by any means, electronic or mechanical, including photocopying or recording, or by any information storage or retrieval system, except as expressly permitted in writing by KIPDA.

LIMITATION OF LIABILITY: KIPDA has no indication or reason to believe that there are any inaccuracies or defects in information incorporated in this work and make NO REPRESENTATIONS OF ANY KIND, INCLUDING, BUT NOT LIMITED TO, THE WARRANTIES OF MERCHANTABILITY OR FITNESS FOR A PARTICULAR USE, NOR ARE ANY SUCH WARRANTIES TO BE IMPLIED, WITH RESPECT TO THE INFORMATION OR DATA, FURNISHED HEREIN.

Figure 14

**PERSONS WITH DISABILITIES
BY CENSUS BLOCK GROUP--2000**
**SCOPING STUDY FOR A PROPOSED INTERCHANGE
ON I-64 IN THE VICINITY OF GILLILAND ROAD**
(KYTC #05-8200 KIPDA #390)

TABLE 8
Persons with Disabilities—2000
Study Area for a Proposed Interchange on I-64 in the Vicinity of Gilliland Road

Area		Total Civilian Noninstitutionalized Population Age 5+	No Disabilities		One or More Disabilities	
			Total	%	Total	%
United States		257,167,527	207,421,279	80.66	49,746,248	19.34
Kentucky		3,695,005	2,820,849	76.34	874,156	23.66
Jefferson County		638,762	508,186	79.56	130,576	20.44
Shelby County		29,844	24,640	82.56	5,204	17.44
Census Areas Intersecting and Surrounding the Study Area	Tract 103.07	1,465	1,320	90.10	145	9.90
	Block Group 1	1,465	1320	90.10	145	9.90
	Tract 116.01	2,826	2,542	89.95	284	10.05
	Block Group 1	1,943	1,759	90.53	184	9.47
	Block Group 2	883	783	88.67	100	11.33
	Tract 116.02	4,665	3,953	84.74	712	15.26
	Block Group 1	827	643	77.75	184	22.25
	Tract 405.00	5,482	4,743	86.52	739	13.48
	Block Group 1	1,665	1,414	84.92	251	15.08
	Block Group 3	1,593	1,412	88.64	181	11.36
	Block Group 4	1,780	1,539	86.46	241	13.54

Note: Only selected Block Groups are represented and do not necessarily sum to Tract totals.
Data Source: 2000 Census SF3, Table P42

Information about persons with disabilities is not available at the block level, making identification of specific neighborhoods or facilities difficult.

OTHER COMMUNITY INFORMATION

While census profiles provided a great deal of information about the locations and magnitudes of potentially impacted populations in and around the study area, other information was utilized when available.

The Christian Methodist Episcopal (CME) Church, a historically African-American Methodist denomination, was founded by emancipated servants and has traditionally served as a social and spiritual center of many African-American communities in the United States. Most CME churches were established by surrounding communities of freedmen and still serve the descendants of their original founders to this day.

The Muir Chapel, a CME church, is located within the Jefferson County portion of the study area at 813 Gilliland Road. The church was contacted to determine its status as a contact point for any nearby African-American populations. According to Pastor Denise Owens-Davis, the Muir Chapel served an adjacent black community for many years, until 20 to 25 years ago when most of the descendants of the original homeowners left the area. Muir Chapel membership has dwindled since that time. Most of the African-American residents in the area now attend other churches, such as Canaan Missionary Baptist, Highview

Baptist, Southeast Christian, and St. Luke Baptist, while Muir's membership now draws from a much larger geographical area.

CONCLUSION

The KIPDA staff assessment of demographic data from the 2000 Census, consideration of information from other sources, and conversations with individuals familiar with the area indicate the following:

- There do not appear to be concentrations of minority populations within the study area;
- There do not appear to be concentrations of low income populations within the study area;
- Elderly persons are not present in significantly different proportions from county, state, or national percentages within the study area; and
- Persons with disabilities are not present in significantly different proportions from county, state, or national percentages within the study area.

Given the level of detail of the available information, the community impact assessment did not uncover any significant concentrations of Environmental Justice populations, elderly, or persons with disabilities within the study area. The information does appear to indicate, however, the presence of these persons within the general resident population in proportions similar to county, state, and national levels. In the absence of defined concentrations of these groups, project-level impact determination and mitigation measures and public involvement activities should be tailored to be inclusive of such persons as they exist within the general study area population.